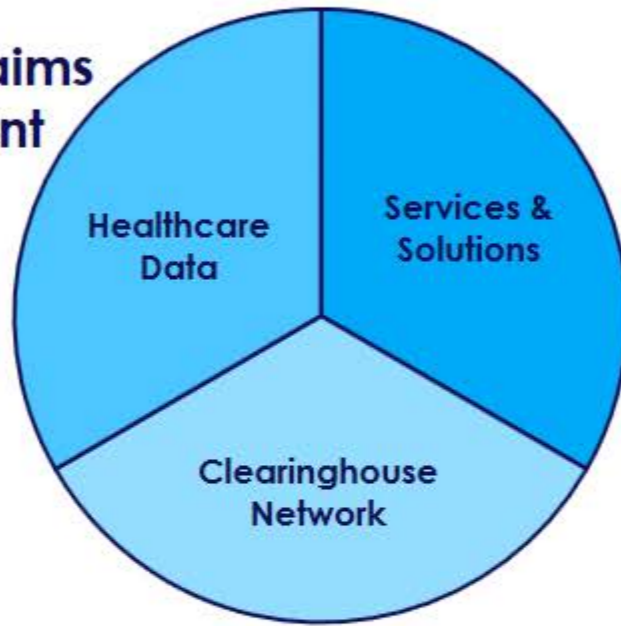


Applying blockchain to the revenue cycle and payment process

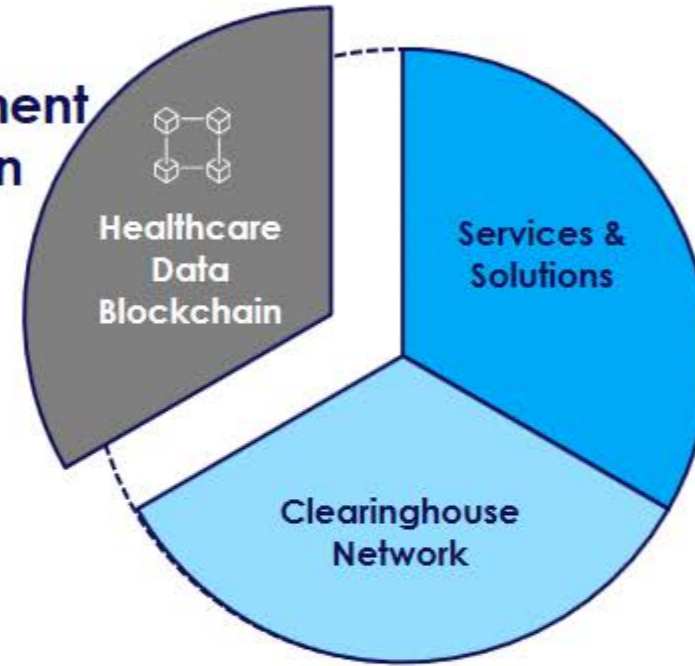
Traditional Claims Management



A traditional, centralized healthcare data store applied to the revenue cycle and payment process

- Centralized data managed and available only through an intermediary
- Data reconciliation processes may need to be employed to validate accuracy and consistency
- Potentially many exchanges between stakeholders before data is ready (clean) to be processed

Claims Management with Blockchain



Decentralized blockchain applied to the revenue cycle and payment process

- Decentralized data available to all stakeholders
- Lower overhead and cost
- Immutable historical healthcare data record
- Transparency of transactions
- Higher payment accuracy and visibility